

APPLICATION

AXLE

SCALE

REV.

DATE

SHIM 100

R

100%

27/11/2014

CHRYSLER: CROSSFIRE
MERCEDES: CLASSE C (W202)
CLASSE C (T203), CLASSE E (A124),
CLASSE E (C124), CLASSE E (T124),
CLASSE E (T210), CLASSE E (W210),
CLK (A208), CLK (C208), CLK (A209),
CLK (C209)

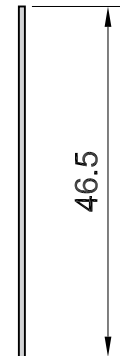
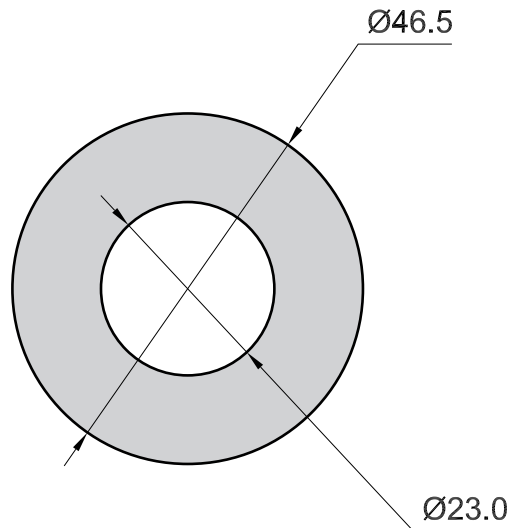
W.V.A.
21305

FMSI
D603

O.E.



MECCANICHE MARCO MORETTO S.R.L.
BRAKE PADS COMPONENTS



Drawing in CAD corrections are not allowed

TOLLERANCE: ± 0.5